

A slide titled "Consolidations" with a dark red background on the left side. The background of the slide features a globe and a network diagram with arrows connecting various nodes. The text on the slide includes: "Course of conduct", "Pattern behavior", and "Title IX: 'arise out of the'". At the bottom left, there is a small copyright notice: "© 2022 © SSMF FOUNDATION". At the bottom right, there is a small number "6".

Special Considerations



LENGTH OF REPORT



DATES



COURSE OF CONDUCT

© 2022 D STAFFORD&ASSOCIATES



10

Evidence Options



Appendix/Exhibits

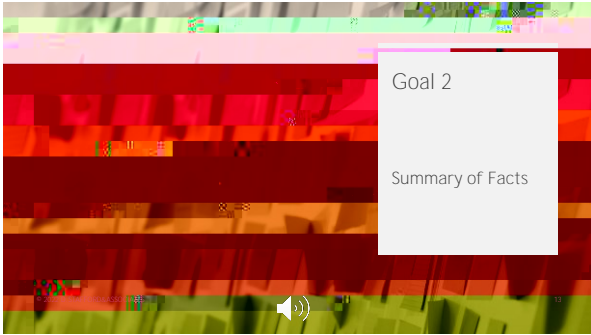


Filing Sharing



Separate Attachment





13



Narrative form

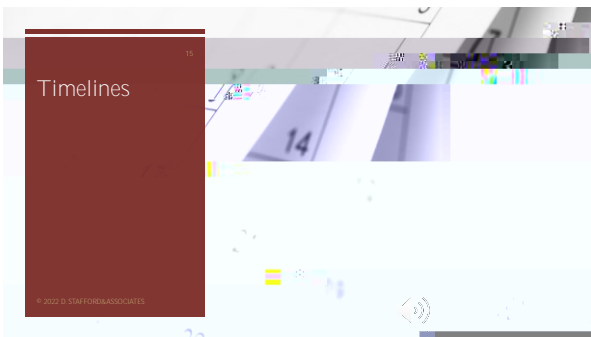


Facts in agreement/
facts in dispute

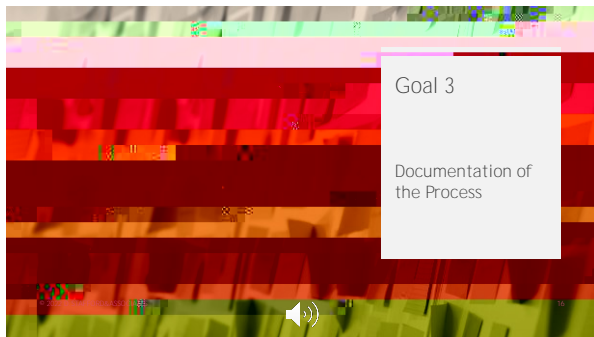
Bulleted list



14



15



Documentation of the Process



Who investigated and where?

What did they do and when?

Why did they do it?



© 2022 © STAFFORD & ASSOCIATES

17

The Investigative Report



- Case Identifiers (Cover Page)
- Allegations & Policy (Scope)
- Investigative Steps (Methodology)
- Summary of Relevant Evidence
- Interviews etc. (Evidence Obtained)

© 2022 © STAFFORD & ASSOCIATES

18

Other possible sections



Timeline of Relationship/Behaviors



Timeline of Notice

© 2022 © STAFFORDASSOCIATES



19

Handwriting practice lines (7 horizontal lines)

20

THE ELEMENTS

© 2022 © STAFFORDASSOCIATES

20

Handwriting practice lines (7 horizontal lines)

Elements | Dating Violence

Relationship

- Length
- Type
- Interaction

Violence

- Sexual
- Physical
- Threats

© 2022 © STAFFORDASSOCIATES



21

21

Handwriting practice lines (7 horizontal lines)

Elements | Domestic Violence



Relationship +

- Spouse/intimate partner
- Child in common
- Cohabitation
- Similarly situated
- Family violence laws

Crime of violence

- Felony
- Misdemeanor

© 2022 © STAFFORD&ASSOCIATES



22

Elements | Stalking



Acts of
stalking
behavior

Two or more
acts

Directed at
a specific
person

© 2022 © STAFFORD&ASSOCIATES

23



For additional information about training or other services we provide, please visit www.dstaffordandassociates.com

© 2022 D STAFFORD & ASSOCIATES



25

25
